

## Who you may meet in the Child Development Unit

Marilyn Lay	Unit Co-ordinator
Sue Murphy	Staff Nurse
Nicola Pallas	Play Specialist
Christine Ross	Nursery Nurse
Margaret Fagan	Nursery Assistant
Janet Hill	Clerical Officer
Patients own named	Consultant Paediatrician
Lynne Abercrombie	Physiotherapists
Sally Rooney	Physiotherapists
Alex Wilberz	Physiotherapists
Desiree Been	Occupational Therapist
Gemma Pardoe	Occupational Therapist
Sue Fox	Speech & Language Therapist
Visiting Educational Psychologists	

We are constantly striving to improve our service to patients and we will welcome your comments or suggestions for improvement.

### You can find additional information on:

[www.nhs.uk](http://www.nhs.uk)

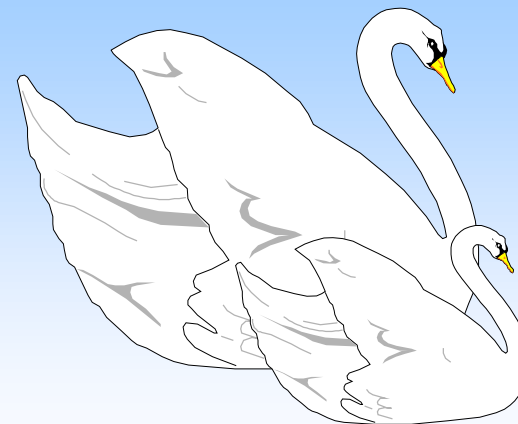
[www.sunderland.nhs.uk/chs](http://www.sunderland.nhs.uk/chs)

This information was correct at the time of printing. While the Trust makes every reasonable effort to keep its information leaflets up to date, very recent changes may not yet be reflected in the guidance and you should discuss this with the clinical staff at the time of your appointment.

Date of publication: Jul 2007  
Date of review: Jun 2010  
Date of CGSG: Oct 2007  
Reference: 113/07

© City Hospitals Sunderland

## THE CYGNET GROUP INFORMATION LEAFLET



Child Development Unit

Children's Centre, Durham Road, Sunderland

## The Cygnet Group

Welcome to Cygnets. This group is specifically for parents / carers of, and their pre nursery aged children who have complex / additional needs. We provide specialist assessment, support, advice and therapeutic approaches to encourage development.

This group is held weekly at the Children's Centre, Durham Road, Sunderland. You will attend with your child on a Wednesday morning 10.00 -12.30 pm during school term time. Children have their lunch as part of this session. Transport is available.

We recognise that parents/carers are the most important people in enabling their child's development. We actively encourage your participation throughout the sessions in order to identify, move towards and achieve goals for your child.

We aim to work in partnership with you and your child, together with the staff in the Child Development Unit and Specialist Therapists to:

- Identify and encourage appropriate seating / positioning of your child to maximise potential development.
- Identify specific areas of need, providing targeted advice, for example: feeding and swallowing, sensory and motor development, toileting, as appropriate.
- Promote fun ways of encouraging development.
- Develop specific learning goals through play.
- Use nursery rhymes and other activities to develop language and communication skills.
- Encourage your child's independence, in all aspects of development, to the best of his/her ability.

- Learn more about aspects of child development, communication and physical handling methods.

### How long will you and your child attend the group?

Length of attendance is individual whilst assessment and identification of needs is carried out. A plan of action / goals are identified for the child, a period of active learning takes place, is evaluated and a discharge meeting date agreed. Other professionals involved with your child from Children's Services and Health may be involved. Information will be shared with you and professionals involved. We aim to contribute to your 'Family Service Plan' (as part of the 'Early Support Programme').

### What you can do:

- Ask questions if you are unsure about anything.
- Attend as many sessions as possible.
- Please let us know if you are unable to attend.
- Join in and enjoy the sessions.

If you have any comments about any aspect of our service please let us know. Tel: 5656256 Ext 45244/45234/45275